



Vliegfeest Moorsele Sat 04 & Sun 05 July 2026

**ANNEX G: OPS ORDER
FLY- IN VISITING PILOTS**

1. GENERAL

- a. Vliegfeest Moorsele is organised by OOVM, a non-profit organisation managing Moorsele airfield, a Belgian Defense owned training facility for light aircraft, helicopters and parachute training. The two-day event is free of charge and open to the general public
- b. All volunteer staff members are aviation fanatics. The event is mainly aimed at thanking the people from the neighbouring villages for their continuous support to the airfield, including the occasional inconvenience caused by noise. Simultaneously it allows presenting aeronautical activities, professions and sports, to the local youth.
- c. Non-homebased aircraft are most welcome, without restrictions except NORDO A/C. Due to the extensive flying display program, aircraft visiting the event are required to adhere to the arrival and departure procedures published in this document.
- d. There are no assigned arrival/departure slots for visiting aircraft. **Visiting traffic is subject to PPR, and should adhere to the following arrival and departure timeframes (identical on Saturday and Sunday):**

Arrival & Departure	10:00LT – 13:00LT 14:00LT – 14:15LT
Departure ONLY!	15:00LT – 15:15LT 16:00LT – 16:15LT 17:00LT – 17:15LT
Arrival & Departure	18:00LT – 20:00LT (airfield closes @20:00LT!)

Arrival and departures during the 10:00LT – 13:00LT time slot might be subject to a 5 to 15min holding time or start-up delay, due to Paradrop activity or Display rehearsal exercises.

- e. Be aware that EBMO is located barely 3NM NW of KORTRIJK AIRPORT (EBKT). When transiting through the EBKT RMZ/TMZ (Radio & Transponder Mandatory Zone), either stay above 2.500ft MSL or contact KORTRIJK INFORMATION on 120.255Mhz for your transit.

- f. There is NO FUEL available at EBMO, however AVGAS 100LL and JET A1 are available at Kortrijk Wevelgem Airport (EBKT), 3NM SE of MOORSELE (landing fees & PPR apply)

2. FLIGHT OPERATION DIRECTIVES

a. ARRIVAL DIRECTIVES

1. A **Temporary Restricted Area (TRA) from GND to 4.500 Ft MSL** is active during the event, and will be published by NOTAM in due time. It covers a circular area **3 NM North, East and West of the Airfield Reference Point** and touches the Radio & Transponder Mandatory Zone (RMZ/TMZ) of KORTRIJK-WEVELGEM (EBKT) airport in the SOUTH.
2. **Entry of the TRA airspace is subject to authorisation by local ATS (callsign 'MOORSELE RADIO' on 120.505 Mhz). Keep a sharp look out, ATS is NOT assuring VFR traffic separation inside the TRA or the ATZ.**

3. Contact 'MOORSELE RADIO' on **120.505 Mhz** at least 5 minutes prior to reaching the TRA inbound for one of the two entry points(see Par(4)below). Monitor frequency continuously and be short and precise when communicating.
Squawk 2000 mode C/S upon entering the TRA.

4. After TRA entry, it is mandatory to join one of the two entry point at 1200ft MSL or at any other ATS indicated altitude.
 - i. **DADDI** N50°51'20" E003°05'20" North-western edge of town DADIZELE
 - ii. **TURBI** N50°53'46" E003°10'33" Highway parking with two wind turbines
5. Expect to hold at the entry point until informed by ATS to start the approach. RH holding patterns. If multiple aircraft would be in the holding, a 300Ft separation in altitude will be applied (1.200Ft, 1.500Ft, 1.800Ft,...);
6. Upon release by ATS, expect to join either downwind OR a direct BASELEG to the active runway.
7. After landing vacate the runway in accordance with the procedure on page 7 and follow ATS instructions. Upon arriving at the parking area, marshalls wearing **ORANGE** Hi- Vis jackets, will guide you to **ABEAM** your parking position.

Engine (s) are to be shut down on the taxiway. Aircraft will then be manoeuvred by hand into your assigned parking position. Manoeuvring with engines running is PROHIBITED within 15m from public.

b. DEPARTURE DIRECTIVES

1. 10min prior to estimated off block, advise ATS on your intentions by visiting physically the temporary ATS tower and/or by calling MOORSELE RADIO on 120.505MHz.

2. Aircraft MUST be manoeuvred by hand onto the taxiway before engine start. Engine(s) are to be started ONLY on the taxiway. Starting on the parking position is strictly PROHIBITED. Use extreme caution when taxiing and try to reduce propwash to a minimum.

3. Taxi-out to the holding point of the active runway while monitoring MOORSELE RADIO frequency (120.505MHz). At the holding advice ATS with a 'ready for departure' call. **Squawk 2000 mode C/S prior to lining-up.**
4. Following the release for Take-Off by ATS maintain runway heading for 1NM at max 800Ft MSL or on an ATS suggested heading, while keeping a sharp look-out for traffic.
5. Leave the TRA at or below 1000Ft MSL while keeping a sharp look out for other traffic and while monitoring MOORSELE RADIO frequency 120.505MHz. Advice 'leaving TRA' and switch to applicable XPDR code.

c. FLY-BY's

1. Occasional Fly-By's may be requested but are subject to ATS approval
2. Fly-By's are to be done in the direction of the active runway, with a flat approach slope on finals, over the runway Northern edge and **NOT lower than 300ft AGL (370Ft MSL)**
3. **NO aerobatic manoeuvres nor steep pitch pull up's or steep bank's are allowed.**

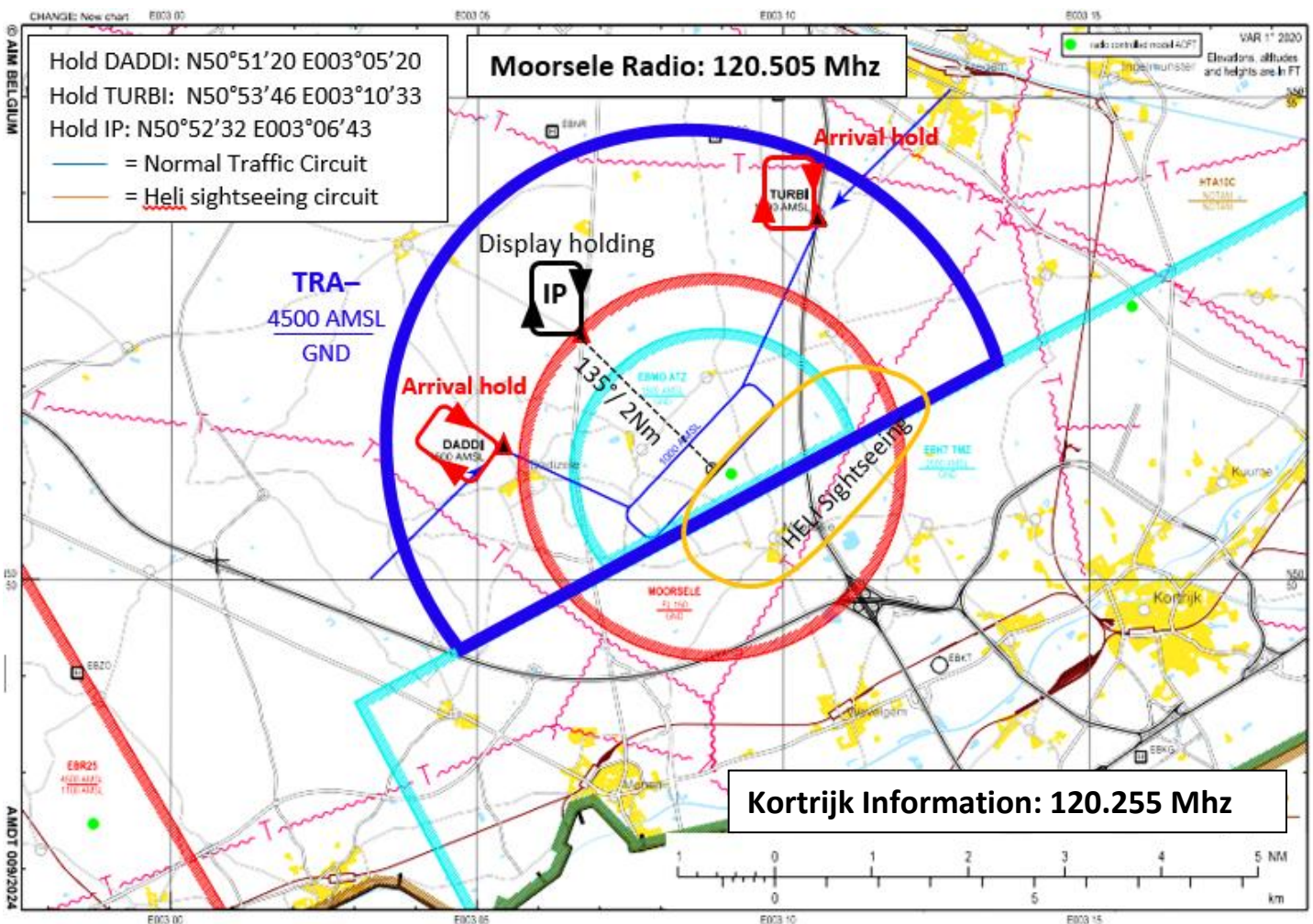
d. COMMUNICATIONS

1. In case a two-way communication with MOORSELE RADIO on 120.505Mhz can NOT be established, **remain clear of the TRA.** Re-join homebase or divert to your alternate.
2. In case communication failure occurs inside the TRA at or prior to reaching DADDI or TURBI intersection, leave the TRA by the shortest possible route, **remaining clear of the ATZ and EBKT RMZ/TMZ at all times.**
3. In case of communication failure after leaving TURBI or DADDI inbound the field, continue towards base leg followed by finals of the active runway while maintaining sharp lookout for other traffic.
4. After landing, vacate the runway and taxi towards the parking area while looking for marshaller guidance. Marshalls will be wearing **ORANGE** Hi-Vis jackets.

b. EMERGENCIES

1. In accordance with Regulations, a Particular Emergency & Intervention plan coordinated with the local Emergency Services and different Law Enforcement Agencies applies to the event.
2. All participants and visitors should adhere to Safety or Security directives indicated by the organising staff. In case a suspicious behaviour is discovered by a visitor or an emergency occurs, it is requested to advice a member of the organising staff or emergency services immediately on location.
3. The local Safety & Security Manager or Display Director can be reached on following mobile phone numbers for any reporting or assistance:
 - ii. Display Director **+32 477 971602**
 - iii. Safety & Security Manager **+32 477 444257**

ARRIVAL AND DEPARTURE INFORMATION



MOORSELE FLY-IN TURBI ARRIVAL PROCEDURE

- PRIOR TO ENTERING TRAE STABLISH TWO WAY COMMUNICATIONS WITH ATS (MOORSELE RADIO ON 120.505 MHz)
 - ON ATS REQUEST JOIN INTERSECTION 'TURBI' @ 1.200FT MSL OR ANOTHER ATS ASSIGNED ALTITUDE AND ENTER A RIGHT HAND HOLDING
- WITH RUNWAY 22 IN USE:**
- FOLLOWING ATS INPUT, LEAVE TURBI INTERSECTION ON TRACK 190 DESCENDING TO 1.000FT MSL AFTER 2NM TURN ON TRACK 220 FOR RUNWAY 22 FINALS;
- WITH RUNWAY 04 IN USE:**
- FOLLOWING ATS INPUT, LEAVE TURBI INTERSECTION ON TRACK 190 DESCENDING TO 1.000FT MSL AFTER 1NM TURN ON TRACK 220 FOR RUNWAY 04 DOWNWIND;
 - FOLLOW ATS INFO TOWARDS BASE AND FINAL TURNS

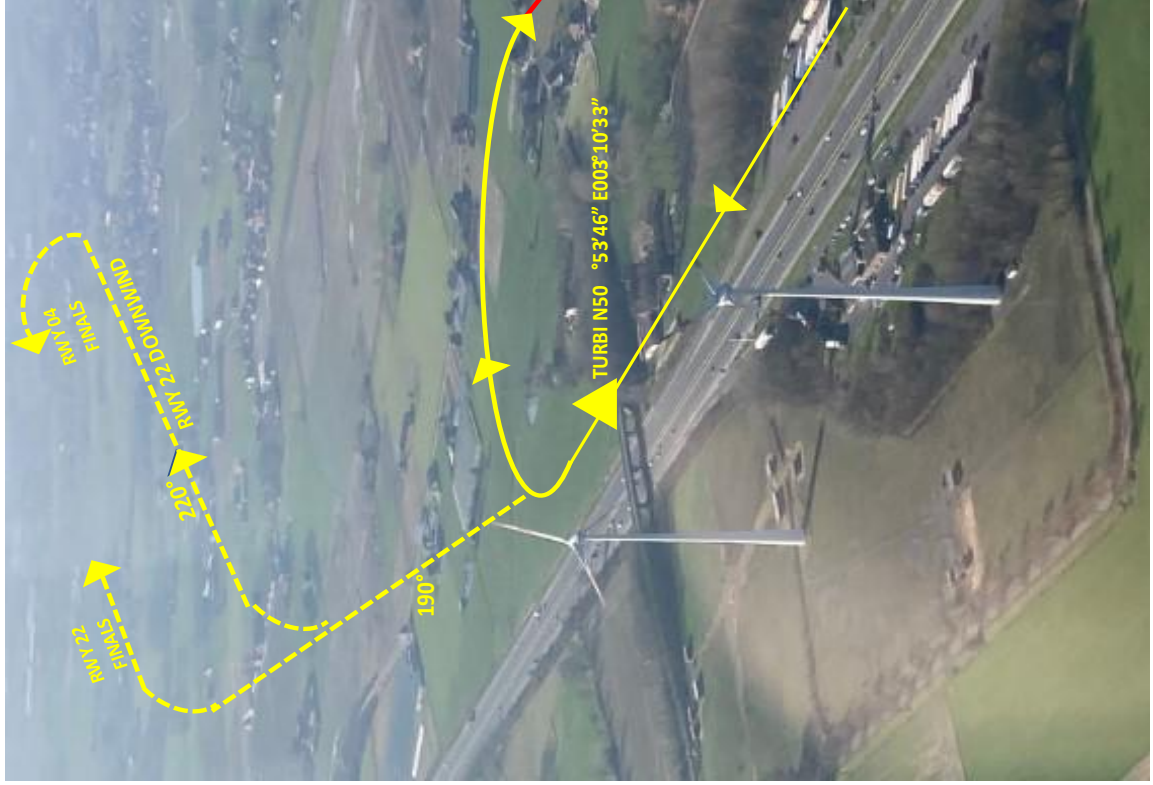


FIGURE 2A : APPROACH INFORMATION (FOR NON-DISPLAYING AIRCRAFT ONLY)

MOORSELE FLY-IN DADDI ARRIVAL PROCEDURE

- PRIOR TO ENTERING TRAESTABLISH TWO WAY COMMUNICATIONS WITH ATS (MOORSELE RADIO ON 120.505 MHz;
 - ON ATS REQUEST JOIN INTERSECTION'DADDI' @ 1.200FT MSL OR ANOTHER ATS ASSIGNED ALTITUDE AND ENTER A RIGHT HAND HOLDING
- WITH RUNWAY 22 IN USE:**
- FOLLOWING ATS INPUT, LEAV DADDI INTERSECTION ON TRACK 135° DESCENDING TO 1.000FT MSL .AFTER 1NM PASSING THE SOUTHERN EDGE OF DADIZELE TOWN TURN ON TRACK 040° FOR RUNWAY 22 DOWNWIND;
- WITH RUNWAY 04 IN USE:**
- FOLLOWING ATS INPUT, LEAV DADDI INTERSECTION ON TRACK 135° DESCENDING TO 1.000FT MSL .AFTER 1.5 NM PASSING 'FLORALUX' TURN ON TRACK 040° ON RUNWAY 04 FINALS;
 - FOLLOW ATS INFO TOWARDS BASE AND FINAL TURNS

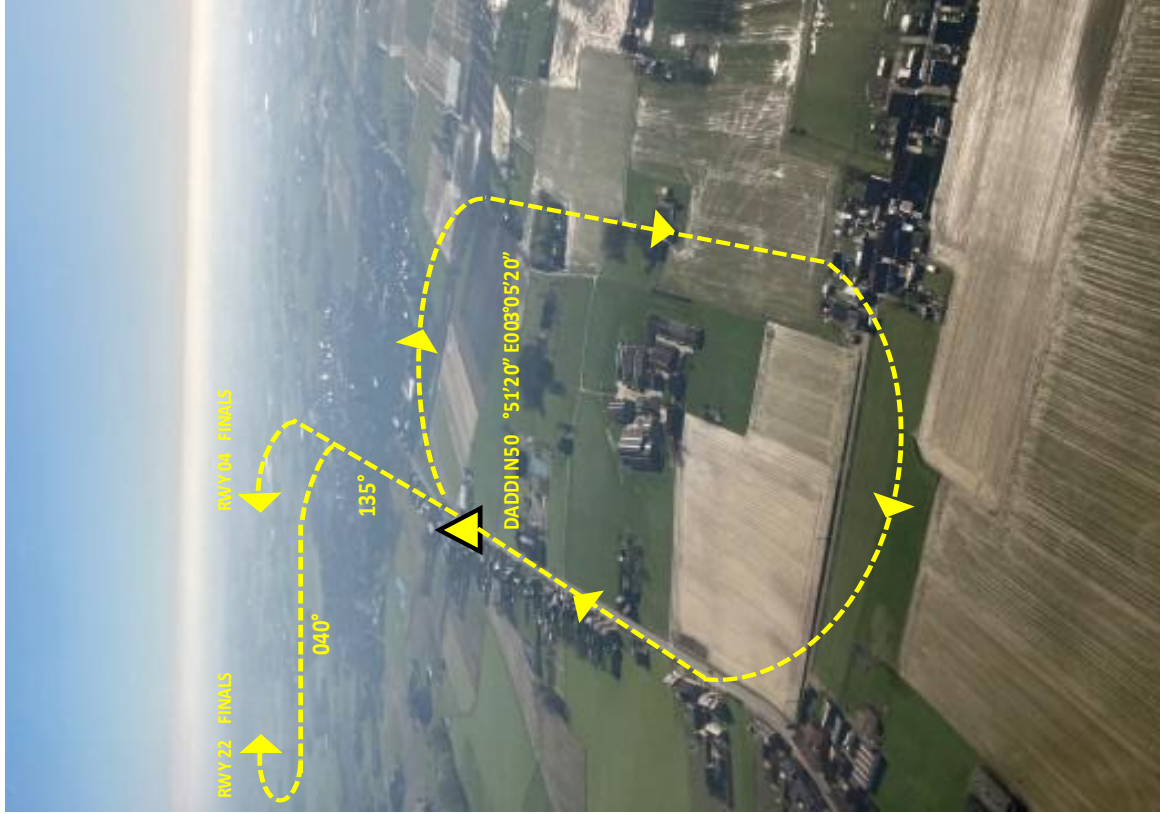
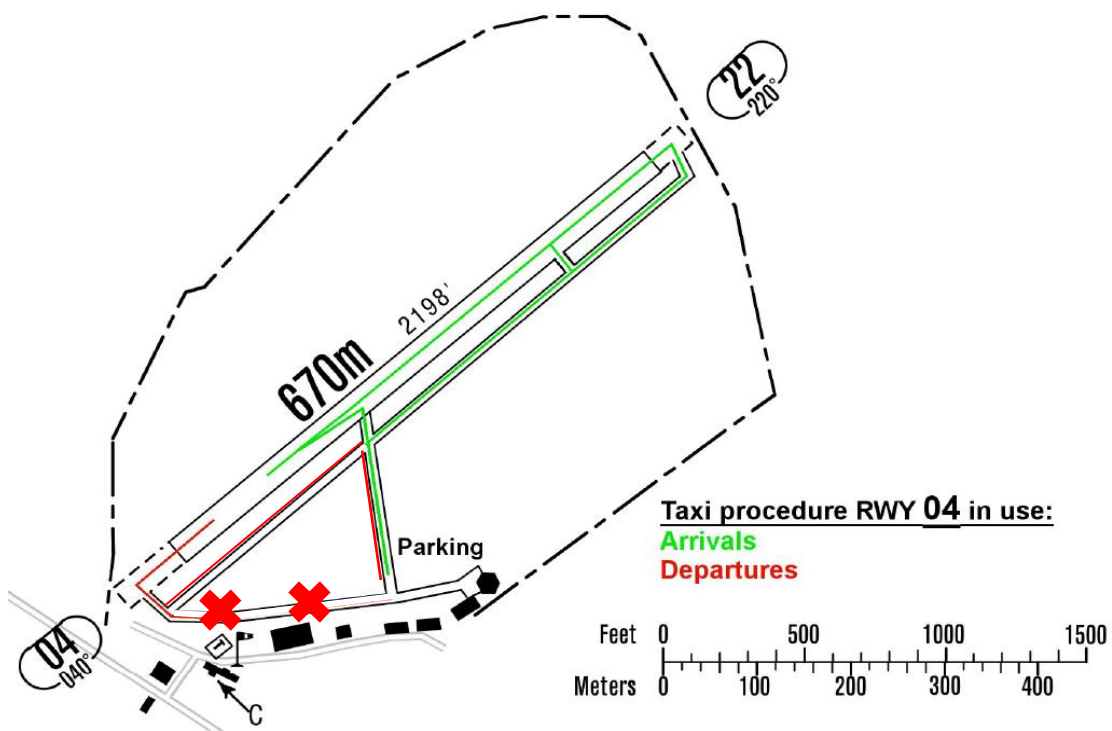
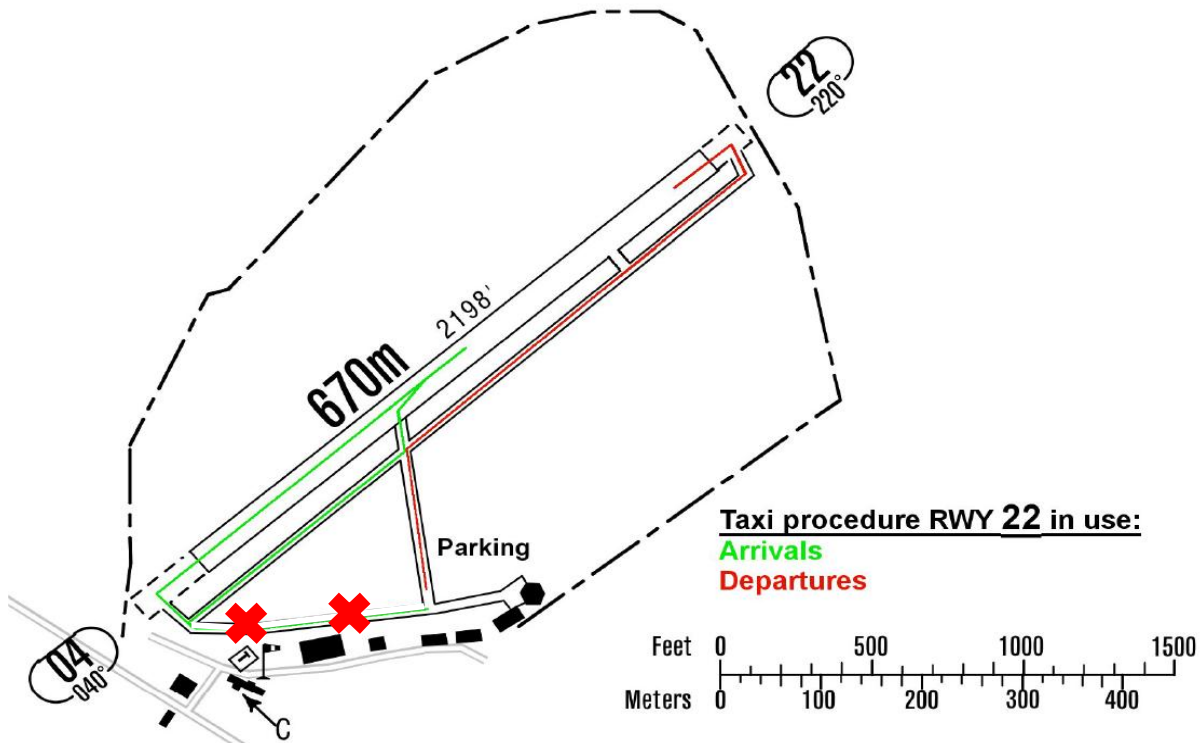


FIGURE 2B : APPROACH INFORMATION (FOR NON-DISPLAYING AIRCRAFT ONLY)

TAXI- and PARKING INFORMATION

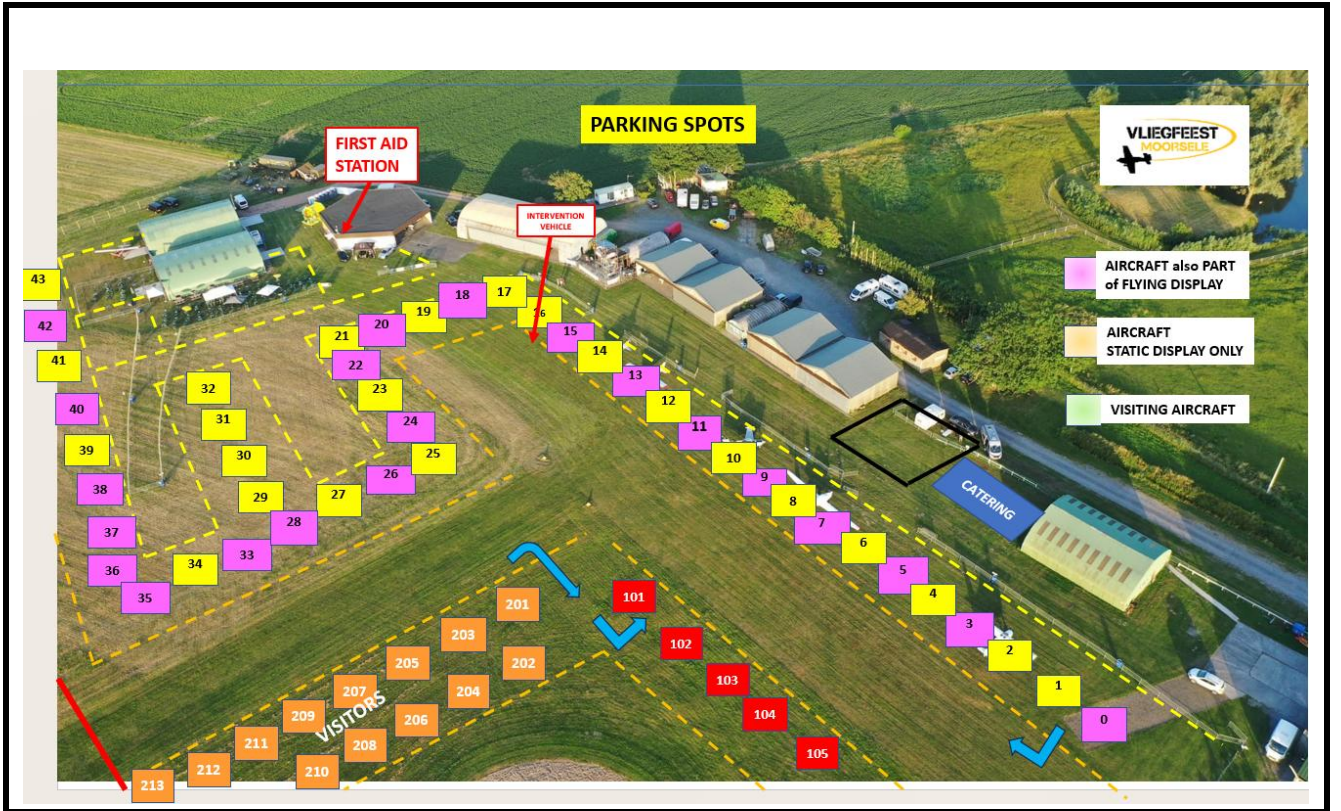


MOORSELE RADIO 120.505 MHz

FIGURE 3 : TAXI PROCEDURES



FIGURE 4: AERIAL OVERVIEW APPROACH RW22



WELCOME & ENJOY

