

MOORSELE FLY-IN & OPEN-DOOR

Sat 29 & Sun 30 June 2019

VISITING PILOT BRIEFING



1. GENERAL

On Sat 29 and Sun 30 Jun a FLY-IN combined with an Open-Door for the general public is organized on the airfield of MOORSELE (EBMO).

Non-homebased aircraft are mostly welcome, without any restrictions. Due to the quite extensive program, aircraft visiting the FLY-IN are however requested to adhere to following published arrival and departure slots. **There are no fixed assigned slots, arrivals and departures can be done freely, as long as they are within the planned arrival timeframes and according published arrival procedures (see Par 2).**

Arrival BLOCK 1 : 10:30Loc – 13:00Loc

Departure BLOCK 1 : 15:20Loc

Departure BLOCK 2 : 18:00Loc – 19:30Loc

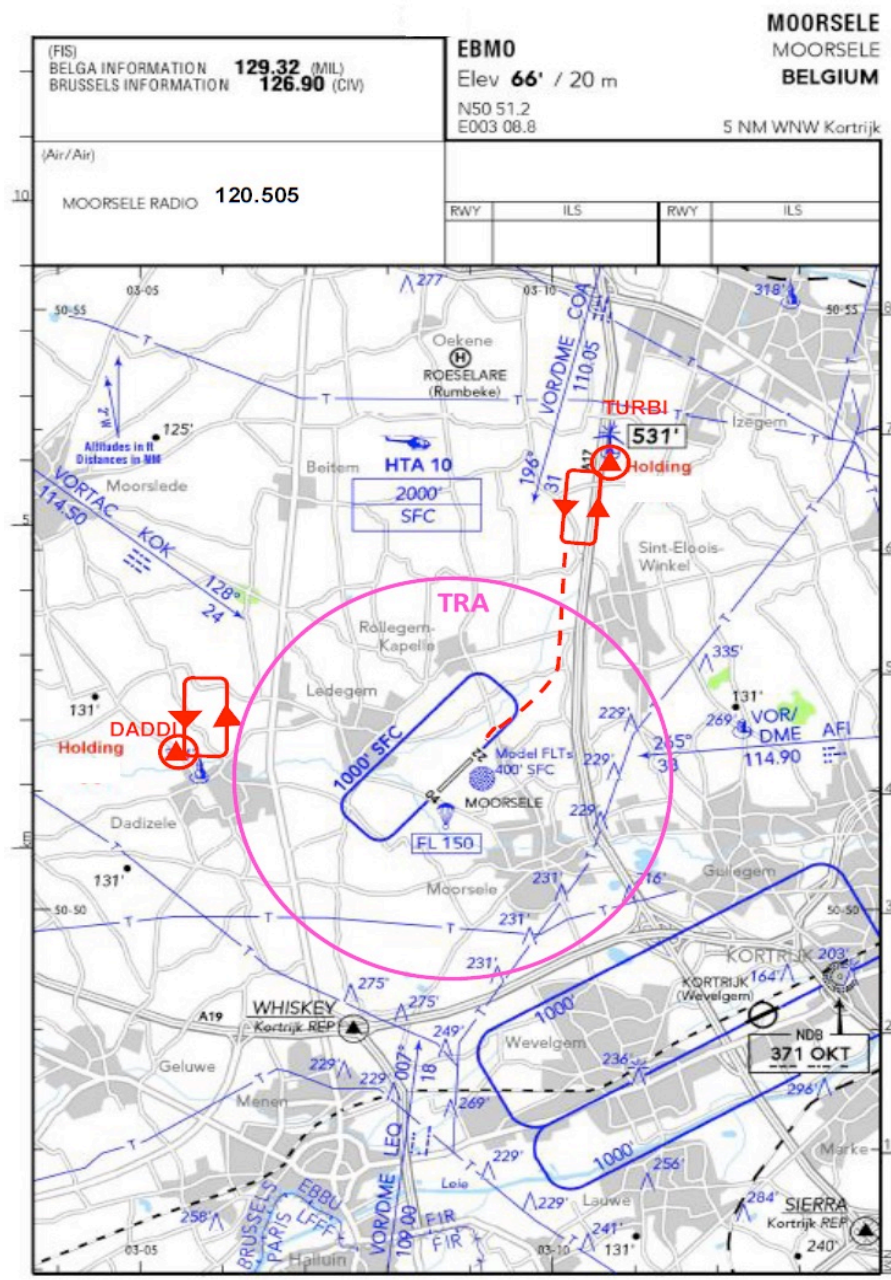
Any arrivals and departures outside these blocks are subject to a case-by-case PPR authorized by the local Flight Director and ATC.

Be aware that EBMO is located just 3NM NW of KORTRIJK AIRPORT (EBKT). In case you are passing in the vicinity or through the RCZ of EBKT, preferably stay above 2.500ft MSL and contact KORTRIJK RADIO on 120.250Mhz.

There is NO FUEL available at EBMO, however AVGAS 100LL and JET A1 is available at KORTRIJK AIRPORT (EBKT), approx 3NM SE of MOORSELE (landing fees apply).

2. ARRIVAL and DEPARTING PROCEDURES

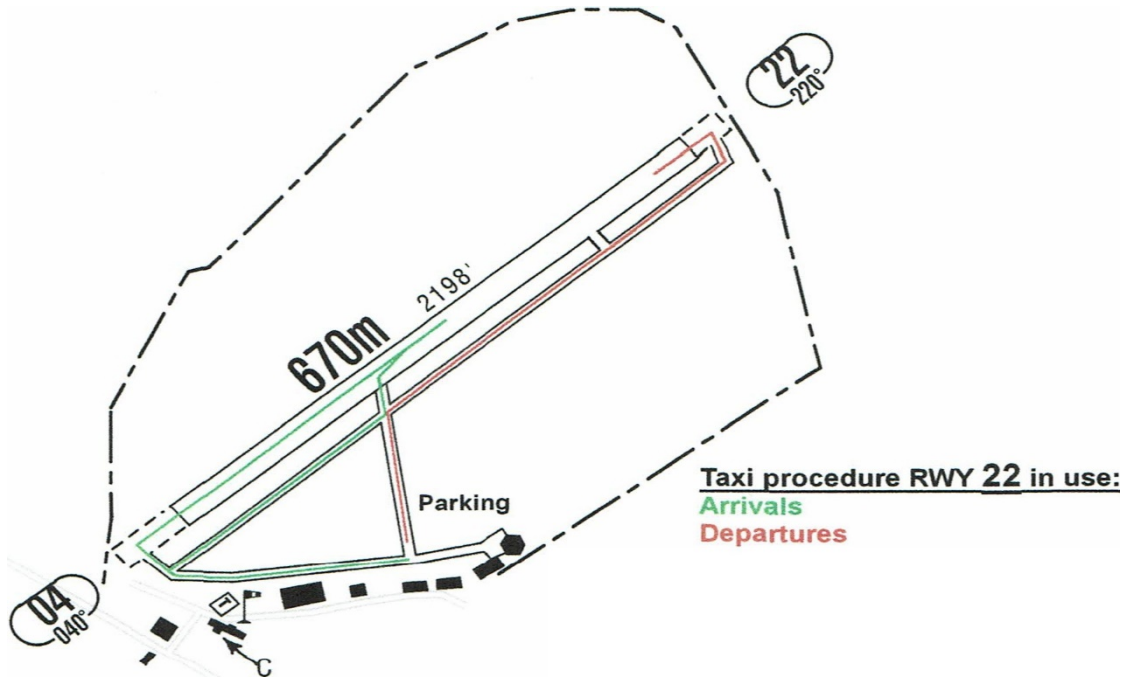
- A Temporary Restricted Area (TRA) is active during the event. The lateral limits correspond to the normal EBMO ATZ. **Entry of the TRA airspace is subject to ATC autorisation by local ATC.**
- Entry of TRA / ATZ is mandatory via one of the two entry points
 - **DADDI** N50°51'20" E003°05'20"
 - **TURBI** N50°53'46 E003°10'33"
- Contact 'MOORSELE RADIO' on **120.505 Mhz** at least 5 minutes prior joining one of the entry points. Monitor frequency constantly. Please be short and precise when communicating.
- Expect to hold at the entry points until released by ATC to start approach. LH pattern in the hold. If multiple aircraft in the same hold, with 200-300Ft separation in altitude (1.000Ft, 1.300Ft, 1.500Ft,...)
- **Upon clearance by ATC expect to join EITHER DOWNWIND OR more likely DIRECTLY a BASE to the active runway.**



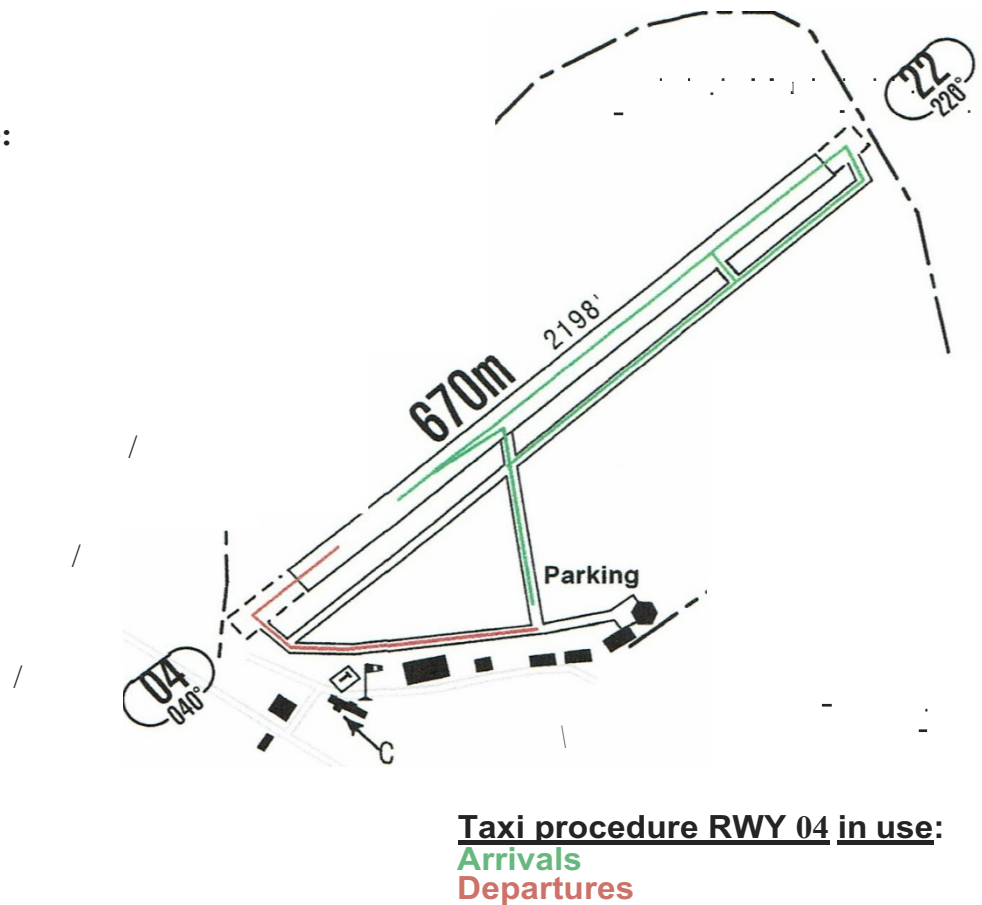
3. TAXI PROCEDURES AND PARKING

Upon arriving at the parking area, a marshaller will guide you to your correct parking.
Use extreme care when taxiing, and apply minimum power only.
Engine(s) are to be shut down as soon as the aircraft is parked.

If RWY 22 is in use:



If RWY 04 is in use:



5. GENERAL RULES

A Yellow or Orange high visibility jacket is mandatory to be worn by the pilot and, preferably, passengers during all foot movement from and to the parked aircraft. It is requested to join the public area on the other side of the pedestrian barrier by the shortest possible way.

Visiting pilots can join the event VIP village (green Nissen bow hangar) where a local fly-in staff member will meet you.

If staying overnight, aircraft can be left on the parked position. Aircraft should be key-locked. The organizing committee cannot be held responsible for any damage occurring overnight to the aircraft.

Prior to start-up engine(s) for departure, a start-up clearance must be requested to ATC. Once cleared, start-up and taxi shall be done immediately and the holding point of the active runway joined in accordance with taxi instructions.

If a low fly-by is intended, this **MUST be requested and approved** by ATC. Flight line is the northern edge of the runway (white line on the general overview on next page) with a 300Ft AGL minimum altitude that applies.

If clarification or additional info is needed, do not hesitate to contact us on

Fly-in Moorsele event.ebmo@gmail.com or 0470/35.10.07 OR 0477/97.16.02

*HOPE TO SEE and MEET YOU SOON
SAFE FLIGHT, HAPPY ARRIVAL*

LUC AUDOORE
MOORSELE FLY-IN
FLIGHT-DIRECTOR

GENERAL ORIENTATION

